

# STONE MEADOWS

A REPLAT OF LOT 28 OF "HARMONY RIDGE" (H-324)  
 IN A PORTION OF THE SE 1/4 SE 1/4 OF SECTION 13, T.2 N., R.2 E.,  
 AND A PORTION OF THE S 1/2 SW 1/4 OF SECTION 18, T.2 N., R.3 E.,  
 AND A PORTION OF THE NE 1/4 NE 1/4 OF SECTION 24, T.2 N., R.2 E.,  
 W. M., CLARK COUNTY, WA.

JOB NO. 88-199 MARCH, 1989

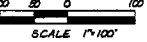
**MAINTENANCE OF PRIVATE ROADS**  
 THE OWNERS AND DEVELOPERS OF THIS SUBDIVISION SHALL BE RESPONSIBLE FOR MAINTENANCE OF ALL PRIVATE ROADS WITHIN THIS SUBDIVISION FOR A PERIOD OF THE (5) YEARS FROM THE DATE OF RECORDING OF THIS SUBDIVISION. THEREAFTER, EACH LOT OWNER HAVING ACCESS TO A PRIVATE ROAD SHALL PARTICIPATE ON AN EQUAL BASIS. NO PRIVATE ROAD WILL BE MAINTAINED BY THE COUNTY UNTIL IMPROVED TO COUNTY STANDARDS AND ACCEPTED.

NOTE: NO LOTS, EXCEPT LOT 41, SHALL HAVE DIRECT ACCESS ONTO N.E. 39th ST. BUT SHALL ACCESS ONLY TO THE INTERNAL STREETS.

NOTE: BRASS SCREWS ARE SET AT THE EXTENSION OF ALL SIDE LOT LINES IN THE CURB. BRASS SCREWS ARE GOOD FOR LINE ONLY AND NOT FOR DISTANCE.

### LEGEND

- INDICATES 1/2" IRON ROD WITH PLASTIC CAP SET
- ( ) DIMENSIONS IN PARENTHESES INDICATE PLAT DIMENSION FROM "HARMONY RIDGE" (H-324)
- INDICATES I.P.R. WITH "LAWSON" CAP 100 FOUND AS IN PLAT "M", PG. 324 UNLESS OTHERWISE NOTED



COUNTY PLANNING DIRECTOR  
 APPROVED BY *[Signature]* COUNTY PLANNING DIRECTOR 5/31/89

COUNTY DEPARTMENT OF PUBLIC SERVICES  
 APPROVED BY *[Signature]* CLERK COUNTY ENGINEER 5/31/89

COUNTY ASSESSOR  
 THIS PLAT MEETS THE REQUIREMENTS OF R.C.W. 16.52.17(10) LAWS OF WASHINGTON, 1961 TO BE KNOWN AS "STONE MEADOWS" PLAT NO. 88-199 IN THE COUNTY OF CLATSOP STATE OF WASHINGTON.  
*[Signature]* COUNTY ASSESSOR

COUNTY AUDITOR 8905310191  
 ATTESTED BY *[Signature]* COUNTY AUDITOR

COUNTY COMMISSIONER  
 APPROVED AND ACCEPTED BY THE BOARD OF COUNTY COMMISSIONERS COUNTY OF CLATSOP STATE OF WASHINGTON THIS 30th DAY OF MARCH 1989.  
*[Signature]* ATTEST: *[Signature]* CLERK TO THE BOARD

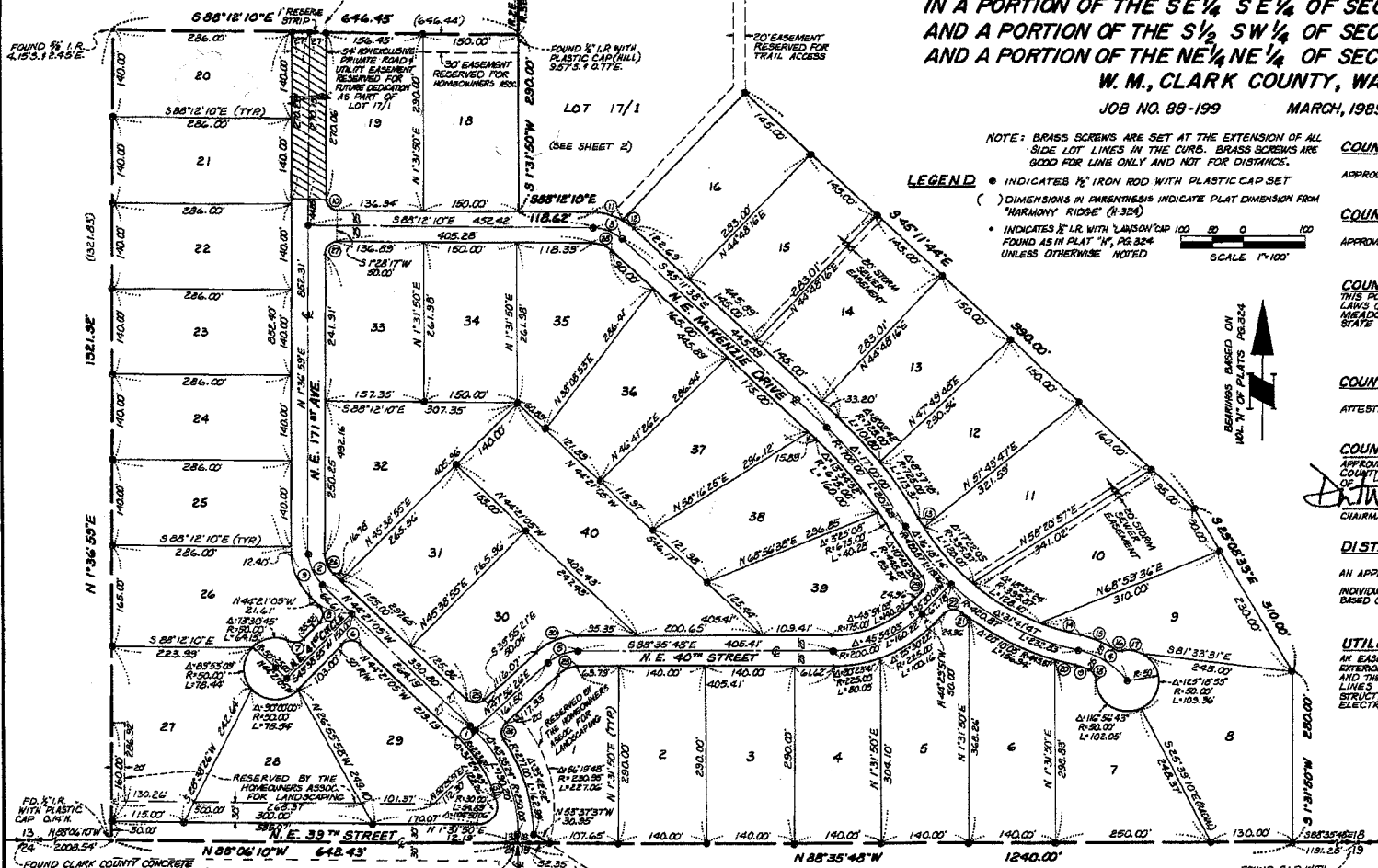
DISTRICT HEALTH OFFICER  
 THIS PLAT APPROVED IN GENERAL ONLY. AN APPROVED PUBLIC WATER SUPPLY IS REQUIRED. INDIVIDUAL, ON SITE SEWAGE DISPOSAL, INDIVIDUAL APPLICANTS TO BE BASED ON REGULATIONS AND EVALUATION AT TIME OF PERMIT APPLICATION.  
*[Signature]* DISTRICT HEALTH OFFICER

UTILITY EASEMENT  
 AN EASEMENT IS HEREBY RESERVED UNDER AND UPON THE EXTERIOR SHAFT FEET OF FRONT AND REAR BOUNDARY LINES AND THE EXTERIOR THREE (3) FEET OF SIDE BOUNDARY LINES OF ALL LOTS FOR THE PURPOSE OF LAYING CONSTRUCTING, REPAIRING, OPERATING AND MAINTAINING ELECTRICAL AND TELEPHONE SERVICE.

LAND SURVEYOR'S CERTIFICATE  
 I HEREBY CERTIFY THAT THIS PLAT, AS SHOWN, IS A TRUE RETURN FROM THE FIELD AND THAT THE DELINEATION IS CORRECT TO THE BEST OF MY KNOWLEDGE AND BELIEF.  
*[Signature]*  
 WILLIAM F. HAGEDORN  
 P.L.S. 9078



NOTE: SEE SHEET 2 FOR LEGEND OF LOT NUMBERS, SQUARE FOOTAGE AND ADDRESSES. AND FOR NOTES ON CONDITIONS OF APPROVAL.



### CURVE DATA

- |   |  |   |   |   |   |  |   |   |   |   |   |
|---|--|---|---|---|---|--|---|---|---|---|---|
| ① Δ=2°17'31"<br>R=250.00'<br>L=103.00'  | ④ Δ=4°07'00.00"<br>R=136.35'<br>L=56.17' | ⑦ Δ=7°23'54"<br>R=50.00'<br>L=23.62'    | ⑩ Δ=8°49'08"<br>R=60.00'<br>L=27.62'    | ⑬ Δ=2°24'56"<br>R=358.87'<br>L=161.67'  | ⑯ Δ=4°07'52'35"<br>R=20.00'<br>L=9.53.25' | ⑲ Δ=12°11'37"<br>R=111.32'<br>L=53.25'   | ⑳ Δ=8°07'25"<br>R=40.00'<br>L=23.43'    | ㉑ Δ=8°42'29"<br>R=30.00'<br>L=30.42'    | ㉒ Δ=4°37'00'35"<br>R=44.00'<br>L=33.76' | ㉓ Δ=4°37'00'35"<br>R=44.00'<br>L=33.76' | ㉔ Δ=1°03'34"<br>R=252.00'<br>L=17.51'   |
| ② Δ=4°58'59'03"<br>R=70.00'<br>L=56.16' | ⑤ Δ=4°35'27'46"<br>R=70.00'<br>L=53.10'  | ⑧ Δ=4°25'25'41"<br>R=80.00'<br>L=31.42' | ⑪ Δ=4°25'25'41"<br>R=80.00'<br>L=31.42' | ⑭ Δ=1°24'56"<br>R=358.87'<br>L=161.67'  | ⑰ Δ=3°36'44'24"<br>R=50.00'<br>L=31.15'   | ⑳ Δ=3°36'44'24"<br>R=445.97'<br>L=30.48' | ㉑ Δ=4°43'27'46"<br>R=40.00'<br>L=34.74' | ㉒ Δ=4°55'58'05"<br>R=40.00'<br>L=34.90' | ㉓ Δ=4°55'58'05"<br>R=40.00'<br>L=34.90' | ㉔ Δ=4°43'27'46"<br>R=40.00'<br>L=34.74' | ㉕ Δ=4°43'27'46"<br>R=40.00'<br>L=34.74' |
| ③ Δ=4°37'00'35"<br>R=70.00'<br>L=52.55' | ⑥ Δ=4°30'00'00"<br>R=70.00'<br>L=51.42'  | ⑨ Δ=4°55'58'05"<br>R=20.00'<br>L=7.02'  | ⑫ Δ=1°53'45"<br>R=91.00'<br>L=42.52'    | ⑰ Δ=2°07'14'39"<br>R=50.00'<br>L=27.34' | ⑱ Δ=6°51'17'35"<br>R=20.00'<br>L=9.53.25' | ㉑ Δ=2°04'11"<br>R=445.97'<br>L=16.11'    | ㉒ Δ=8°17'07"<br>R=20.00'<br>L=9.53.25'  | ㉓ Δ=8°07'52"<br>R=20.00'<br>L=9.53.25'  | ㉔ Δ=8°07'52"<br>R=20.00'<br>L=9.53.25'  | ㉕ Δ=4°43'27'46"<br>R=40.00'<br>L=34.74' | ㉖ Δ=4°43'27'46"<br>R=40.00'<br>L=34.74' |